



# FACILITIES SERVICES DIVISION

## *Consolidated Monthly Program Status Report*



## *Consolidated Monthly Program Status Report*

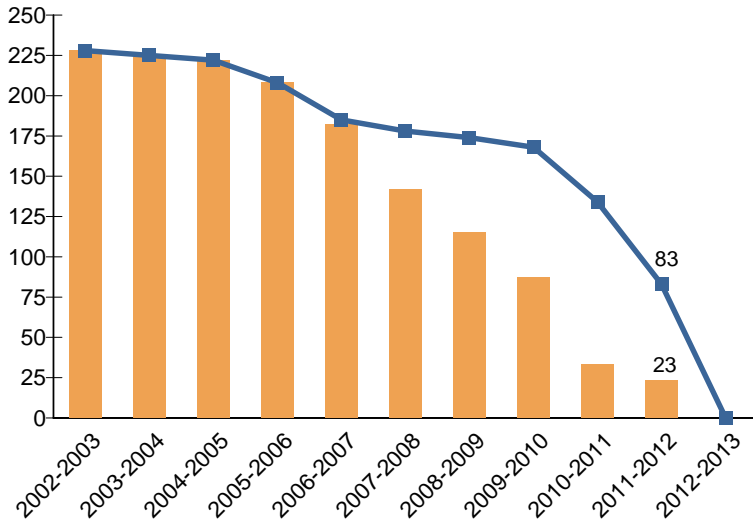
### TABLE OF CONTENTS

Program Goals	1
Key Deliverables	2
Capital Needs Assessment and Master Planning Effort	4
Monthly Progress	5
New Construction Change Order Rates	13
Repair & Modernization Change Order Rates	14
Change Order Processing Time	22
Unallocated Bond Funds	23
Federal Stimulus Bond Status (BAB and QSCB)	24
Board of Education Actions	25

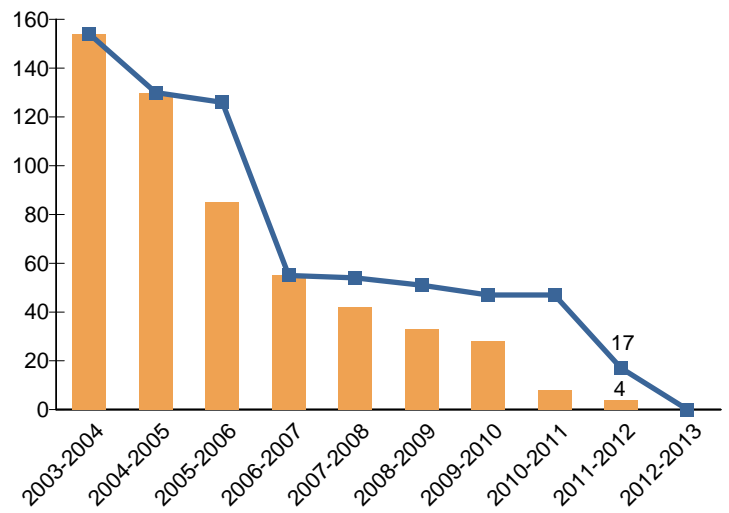


### PROGRAM GOALS

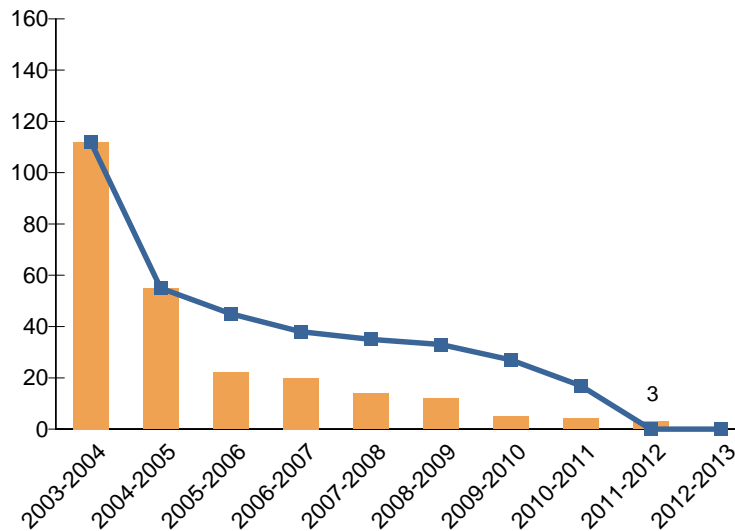
**Schools on Multi-Track Calendar**



**Schools on Concept 6 Calendar**



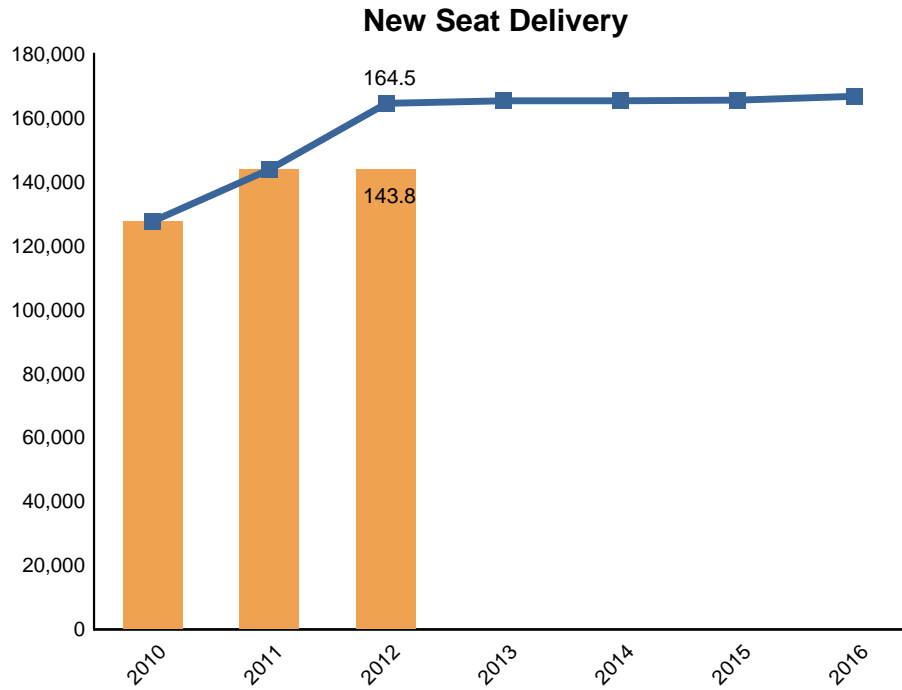
**Schools with Involuntary Busing**



— Baseline      — Actual



### KEY DELIVERABLES



### New Schools & Additions Opening in 2012

#### New Construction

Project Name	Substantial Completion
South LA Area New HS #3	Completed Q4-2011
Central Region EEC #2	Q1-2012
Central Region Glassell Park EEC	Q2-2012
Central Region ES #22	Q2-2012
South Region HS #6	Q2-2012
South Region ES #5	Q2-2012
South Region MS #3	Q2-2012
South Region HS #9	Q2-2012
Valley Region Span K-8 #2	Q2-2012
South Region HS #15	Q2-2012
South Region ES #12	Q2-2012
South Region ES #11	Q2-2012
South Region ES #10	Q2-2012
South Region ES #9	Q2-2012
Valley Region Bellingham ES Addition	Q2-2012
Valley Region Span K-8 #1	Q2-2012
South Region Span K-8 #1	Q2-2012

#### New Construction

Project Name	Substantial Completion
Central Region ES #21	Q3-2012
135th St. ES Addition	Q3-2012
Harbor City ES Addition	Q3-2012
South Region HS #12	Q3-2012
Valley Region ES #13	Q3-2012
Central Region MacArthur Park ES Addition	Q3-2012
South Region HS #7	Q3-2012
East LA Star Adult Education	Q3-2012

#### Capital Improvement Program Reserve (CIPR)

Project Name	Substantial Completion
Bell Education Center (Phase 2)	Q2-2012
East LA Star HS Academy	Q3-2012
Valley Region MS #3	Q3-2012

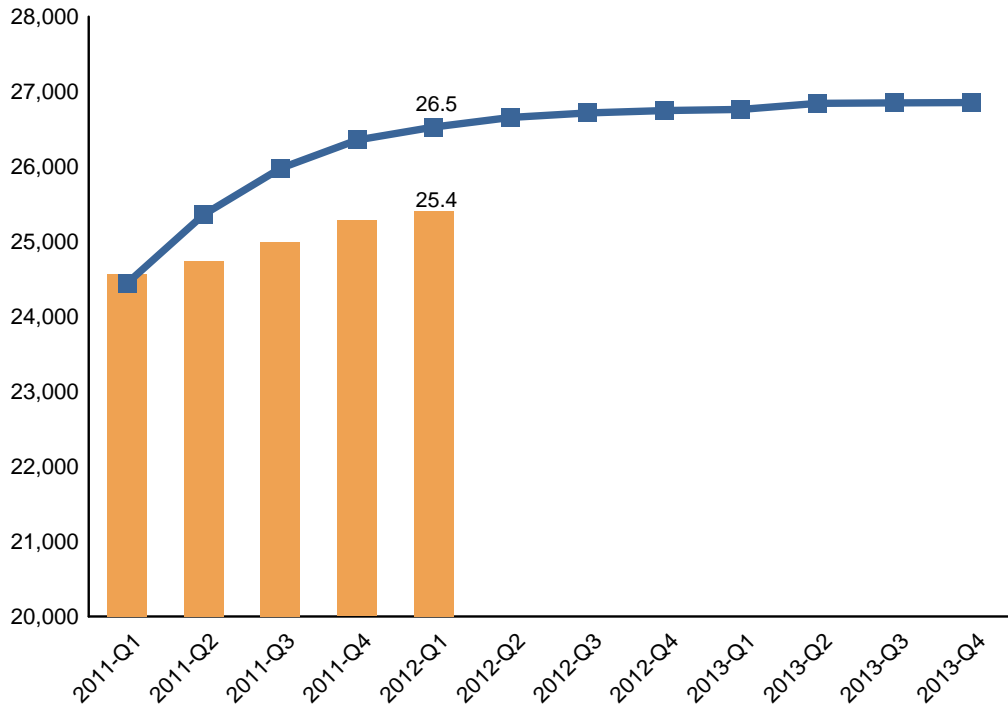


Actual data in the New Seat Delivery chart is adjusted at School Occupancy with additional data on Substantial Completion for projects opening in 2012 provided in the table above; Baseline is the 2011 Facilities Services Division Strategic Execution Plan

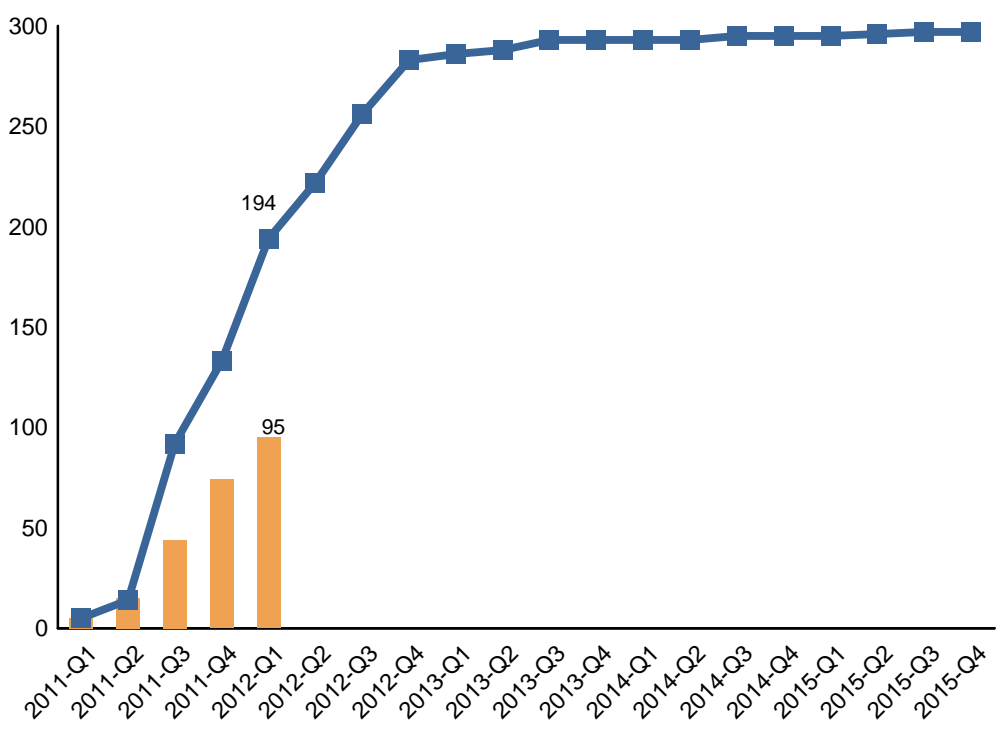


### KEY DELIVERABLES

#### Repair & Modernization Project Completion



#### CIPR Project Completion

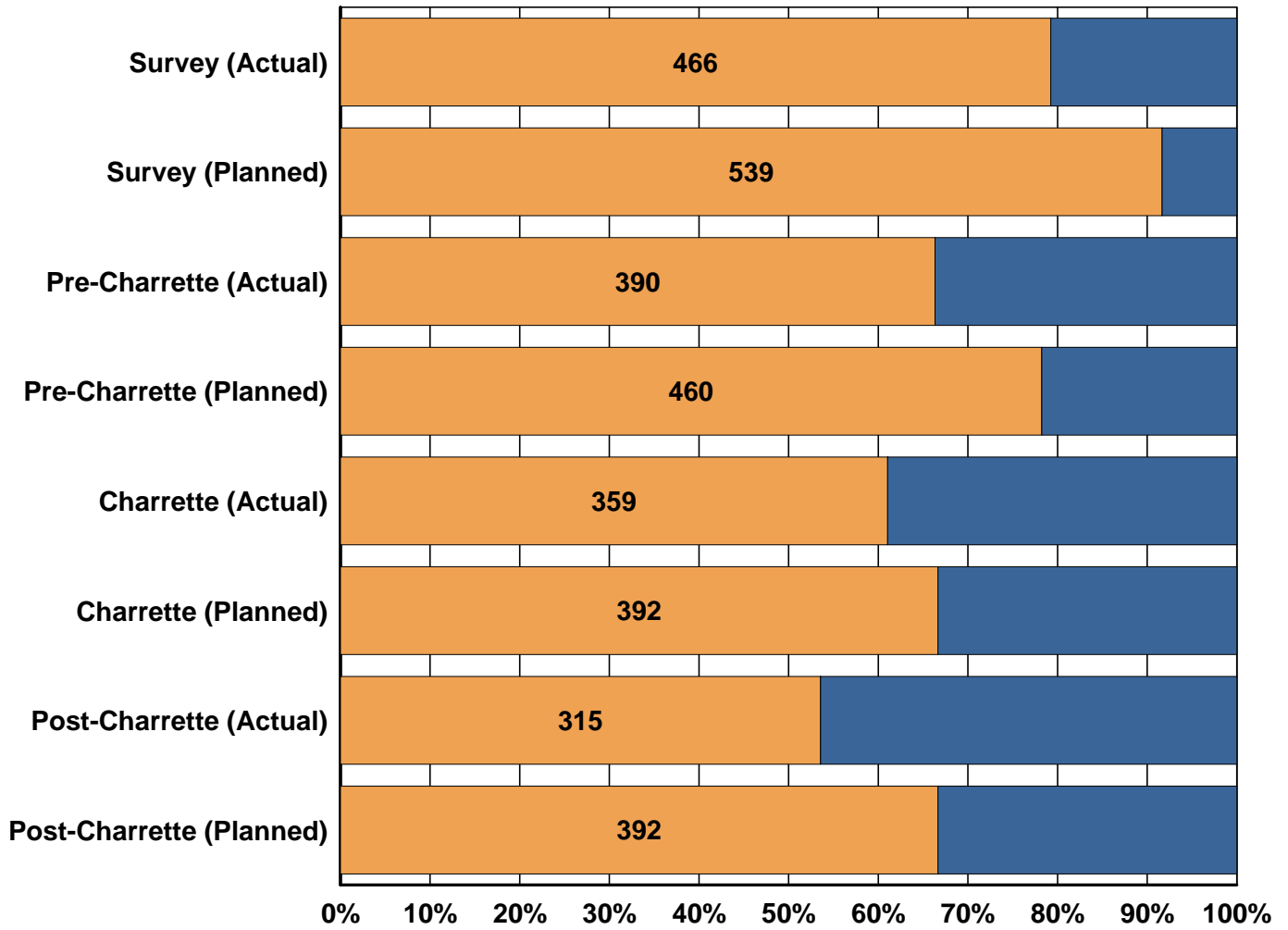


— Baseline      — Actual

Actual data in the charts above is adjusted at Substantial Completion; Baseline is the 2011 Facilities Services Division Strategic Execution Plan



### CAPITAL NEEDS ASSESSMENT AND MASTER PLANNING EFFORT



Progress shown for the Capital Needs Assessment & Master Planning Effort as of February 29, 2012



**MONTHLY PROGRESS**

**NTP Design: New Construction**

Project #	Project Name	Date
N/A		

**NTP Design: Repair & Modernization**

Project #	School Name	Project Description	Date
N/A			

**NTP Design: Capital Improvement Program Reserve (CIPR)**

Project #	Project Name	Date
56.40074A	Central Region ES #20 - Photovoltaic Installation	17-Feb-12

**DSA Approval: New Construction**

Project #	Project Name	Date
N/A		

**DSA Approval: Repair & Modernization**

Project #	School Name	Project Description	Date
1ZG93-1	Grant HS	Grandstands	16-Feb-12
1ZD76-1	Narbonne HS	Chemistry Lab	22-Feb-12
4945F-2	Lorena ES	ADA Wonder of Reading at Lunch Shelter	5-Mar-12

**DSA Approval: Capital Improvement Program Reserve (CIPR)**

Project #	Project Name	Date
56.40105	Chatsworth HS - Baseball Netting	29-Feb-12
23.09960	M&O Central 3 Office - Photovoltaic Installation	29-Feb-12
23.10053	Calahan ES - Technology Upgrades & Campus Improvements	7-Mar-12
23.10060	Dearborn ES - Shade Shelters & Technology Upgrades	7-Mar-12
23.10241	Riordan PC - Photovoltaic Installation	7-Mar-12
23.10076	Welby Way ES - Technology & Playground Upgrades	7-Mar-12
23.10236	Central Region HS #13 - Photovoltaic Installation	9-Mar-12
23.10248	SE Area New Learning Center - Photovoltaic Installation	14-Mar-12
23.10329	South Region ES #5 - Photovoltaic Installation	14-Mar-12



---

**NTP Construction: New Construction**

---

Project #	Project Name	Date
N/A		

---



**NTP Construction: Repair & Modernization**

<b>Project #</b>	<b>School Name</b>	<b>Project Description</b>	<b>Date</b>
1ZUJ5-1	Crescent Heights EEC	Mitigate Lead in Water	16-Feb-12
881Q0-1	Wilson HS	Handicap Restroom Renovations	16-Feb-12
2Z249-1	Normont ES	Mitigate Lead In Water	17-Feb-12
1ZSR6-1	20th St. ES	Non Air-Conditioned Classrooms & MDF Room	21-Feb-12
1ZSM5-1	Byrd MS	Non Air-Conditioned Classrooms & MDF Room	21-Feb-12
1ZWB9-1	Locke EEC	Wellness Center	21-Feb-12
1ZN82-1	Los Angeles HS	Repair/Replace Floor Covering in Student Dining	21-Feb-12
1ZU46-1	Euclid ES	Non Air-Conditioned Spaces - Phase IB	22-Feb-12
1ZUK2-1	Marvin EEC	Mitigate Lead in Water	27-Feb-12
1ZWW1-1	Haddon ES	Mitigate Lead in Water	28-Feb-12
1ZSN2-1	Mount Gleason MS	Non Air-Conditioned Classrooms & MDF Room	28-Feb-12
1ZUO3-1	Dacotah EEC	Mitigate Lead in Water	1-Mar-12
1ZUL6-1	Lafayette Park PC	Mitigate Lead in Water	1-Mar-12
UC234-1	Laurel EEC	2-New Shade Shelters - ADA Portion	1-Mar-12
1ZT01-1	San Pedro Community Adult School EEC	Non Air-Conditioned Classrooms & MDF Room	1-Mar-12
1ZJJ5-1	White MS	ADA Ramps to Rooms 59/60 & 67/68	1-Mar-12
1ZLK4-1	Bravo Medical Magnet HS	Cafeteria Electronic Door	2-Mar-12
1ZWW4-1	6th Ave. ES	Mitigate Lead in Water	5-Mar-12
1ZTE8-1	Braddock ES	Mitigate Lead in Water	5-Mar-12
1ZSB2-1	Ford ES	Exterior Lighting	5-Mar-12
1ZVZ1-1	Fremont HS	Community Garden & Wellness Center	5-Mar-12
1ZWS1-1	Gompers MS	Paint Interior of 71 Classrooms	5-Mar-12
1ZQT1-1	Graham ES	Exterior Painting & Refinish	5-Mar-12
1ZW72-1	Westport Heights ES	Convert Classroom into Computer Lab	5-Mar-12
1ZSY3-1	Banning HS	Non Air-Conditioned Classrooms & MDF Room	6-Mar-12
1ZSQ2-1	Cheremoya ES	Non Air-Conditioned Classrooms & MDF Room	6-Mar-12
888Q8-1	Evans Community Adult School	Portables - Seismic Retrofit	6-Mar-12
1ZW82-1	Manual Arts HS	Joint-Use School-Based Clinic	12-Mar-12
1ZTF4-1	West Vernon ES	Mitigate Lead in Water	12-Mar-12
2Z106-1	Harrison ES	Parent Center Upgrades	13-Mar-12
2Z177-1	Pomelo ES	Additional Telephone Line In Conference Room	13-Mar-12
1ZU52-1	Bethune MS	Non Air-Conditioned Spaces - Phase IB	14-Mar-12



**NTP Construction: Repair & Modernization**

<b>Project #</b>	<b>School Name</b>	<b>Project Description</b>	<b>Date</b>
1ZSZ3-1	La Salle ES	Non Air-Conditioned Classrooms & MDF Room	14-Mar-12
2Z247-1	Leland ES	Mitigate Lead In Water	14-Mar-12
1ZW83-1	Washington Preparatory HS	Joint-Use School-Based Clinic	15-Mar-12

**NTP Construction: Capital Improvement Program Reserve (CIPR)**

<b>Project #</b>	<b>Project Name</b>	<b>Date</b>
23.10233	Narbonne HS - Facelift	17-Feb-12

**Substantial Completion: New Construction**

<b>Project #</b>	<b>Project Name</b>	<b>Date</b>
N/A		



**Substantial Completion: Repair & Modernization**

<b>Project #</b>	<b>School Name</b>	<b>Project Description</b>	<b>Date</b>
2Z001-1	75th St. ES	Interior Library Reading Area	16-Feb-12
1ZSF4-1	Mid-City Magnet School	Gardening, Landscaping, & Mural Repair	16-Feb-12
1ZZY2-1	Overland ES	Landscape / Irrigation	16-Feb-12
2Z278-1	Harvard ES	Remove Decomposed Granite & Pave Walkway	17-Feb-12
1Z176-1	Hyde Park EEC	Add Interior Lighting	17-Feb-12
220Q3-1	Brainard ES	ADA Restroom, Changing Table, and Sinks	21-Feb-12
1ZSM1-1	Beachy ES	Non Air-Conditioned Classrooms & MDF Room	23-Feb-12
1ZSM9-1	Herrick ES	Non Air-Conditioned Classrooms & MDF Room	23-Feb-12
2Z178-1	Van Nuys ES	Purchase & Install Chain Link Fence	24-Feb-12
882Q1-1	Gates EEC	New Shade Shelters	27-Feb-12
1ZWS4-1	Ritter ES	Paint Interior of 27 Classrooms	27-Feb-12
1ZGA7-1	Bell HS	Renovate Auditorium	29-Feb-12
1ZEK2-1	Lemay ES	Roof Coverings	29-Feb-12
1ZVZ4-1	Trinity ES	Community School Park	29-Feb-12
615Q9-1	Adams MS	Access Ramp to Main Building East Exit	1-Mar-12
1ZK95-1	Dacotah EEC	Modernization	1-Mar-12
1Z482-1	Evergreen EEC	Add or Replace Markerboards	1-Mar-12
1Z228-1	Gates EEC	Provide/Replace Window Blinds	1-Mar-12
358Q2-1	Lincoln HS	Provide Security Lighting	1-Mar-12
1ZUM4-1	Meridian EEC	Mitigate Lead in Water	1-Mar-12
1Z206-1	Logan EEC	Replace Carpeting	2-Mar-12
2Z065-1	Taper ES	Relocate Bungalows	4-Mar-12
1Z184-1	Grant EEC	Replace Carpeting/Vinyl Flooring	5-Mar-12
1ZSR3-1	Plasencia ES	Non Air-Conditioned Classrooms & MDF Room	6-Mar-12
1Z409-1	Rosewood EEC	Replace Deteriorated Windows	7-Mar-12
888Q8-1	Evans Community Adult School	Portables - Seismic Retrofit	8-Mar-12
1ZU35-1	Mayall ES	Non Air-Conditioned Spaces - Phase IB	8-Mar-12
2Z166-1	San Pedro HS	Purchase & Install Security And Emergency Grills	9-Mar-12
1ZN82-1	Los Angeles HS	Repair/Replace Floor Covering in Student Dining	13-Mar-12
1ZUG7-1	Noble EEC	Mitigate Lead in Water	14-Mar-12
1ZUJ9-1	Marina EEC	Mitigate Lead in Water	15-Mar-12



---

**Substantial Completion: Capital Improvement Program Reserve (CIPR)**

---

<b>Project #</b>	<b>Project Name</b>	<b>Date</b>
23.10198	Curtiss MS - Facelift	17-Feb-12
23.10159	Wilson HS - Facelift	5-Mar-12
23.10221	Bancroft MS Performing Arts Magnet - Facelift	15-Mar-12

---

**DSA Certification: New Construction**

---

<b>Project #</b>	<b>Project Name</b>	<b>Date</b>
N/A		

---



**DSA Certification: Repair & Modernization**

<b>Project #</b>	<b>School Name</b>	<b>Project Description</b>	<b>Date</b>
4425H-1	Harbor City ES	25 Classrooms, Safety & Technology	17-Feb-12
4425H-2	Harbor City ES	Trenching - Safety & Technology	17-Feb-12
3829H-2	Broadous ES	S&T Underground Conduit Runs	21-Feb-12
1ZF25-1	Fenton ES	Fire Alarm System	23-Feb-12
702Q1-1	Kennedy HS	Install Scoreboard	23-Feb-12
7836H-2	Winnetka ES	Underground Conduit For Future S&T	23-Feb-12
7205H-3	Towne ES	Fire Alarm	24-Feb-12
1ZAC9-1	Del Amo ES	Fire Alarm System	27-Feb-12
1908H-2	Leichman Special Education HS	Underground Conduit For Future S&T	28-Feb-12
457Q6-1	Audubon MS	Fire Alarm System	29-Feb-12
457Q6-2	Audubon MS	Elevator Controller	29-Feb-12
8028H-1	Audubon MS	87 Classrooms, Safety & Technology	29-Feb-12
02514-1	Hollenbeck MS	Replace Multi-Zone Units	29-Feb-12
09635-1	Hollenbeck MS	Replace A/C Duct on Roof of Cafeteria	29-Feb-12
6052E-1	Paseo del Rey Natural Science Magnet	19 Classrooms Requiring AC & Office	29-Feb-12
6052E-2	Paseo del Rey Natural Science Magnet	Air Conditioning	29-Feb-12
8110E-1	Dodson MS	Classrooms Requiring AC & Office	1-Mar-12
4117H-2	Germain ES	Safety & Technology - Conduits	1-Mar-12
6952H-1	Stoner ES	43(46) Classrooms, Safety & Technology	1-Mar-12
6952H-2	Stoner ES	43 S&T Trenching	1-Mar-12
781Q4-1	Stoner ES	Upgrade Fire Alarm & Comply with State Requirements	1-Mar-12
995Q0-1	White Point ES	Upgrade Fire Alarm & Comply with State Requirements	1-Mar-12
211Q8-1	Hawaiian ES	Upgrade Fire Alarm & Comply with State Requirements	3-Mar-12
8878H-2	Sylmar HS	Phase II Lead & Asbestos Monitoring	6-Mar-12
4692H-1	Justice ES	28/26 Classrooms, Safety & Technology	12-Mar-12
2704H-1	Calabash ES	22/13 Classrooms, Safety & Technology	13-Mar-12
4445H-3	Hart ES	32 Roof Mounted Conduit Supports	13-Mar-12
4760H-4	Kittridge ES	Safety & Technology	13-Mar-12
5699H-2	Norwood ES	Safety & Technology - Fire Alarm Only	15-Mar-12



**DSA Certification: Capital Improvement Program Reserve (CIPR)**

---

<b>Project #</b>	<b>Project Name</b>	<b>Date</b>
------------------	---------------------	-------------

---

N/A



**NEW CONSTRUCTION CHANGE ORDER RATES**

**PROJECTS COMPLETED PRIOR TO 2011**

Total Number of Projects Completed Prior to 2011		Seats	Original Contract Amount	Final Contract Amount	Total Change Order %	User Change Order %
Renovation	4	1,841	\$71,185,500	\$90,037,132	26.48%	2.69%
All Other Projects	216	112,756	\$3,611,782,701	\$3,873,902,372	7.26%	0.38%
<b>Total</b>	<b>220 Projects</b>	<b>114,597</b>	<b>\$3,682,968,201</b>	<b>\$3,963,939,504</b>	<b>7.63%</b>	<b>0.43%</b>

**PROJECTS COMPLETED FROM 2011 FORWARD**

Project Name	Seats	Date Complete	Original Contract Amount	Final Contract Amount	Total Change Order %	User Change Order %
Valley Region Blythe ES Addition	400	2011-Q1	\$5,648,000	\$6,852,014	21.32%	13.37%
Valley Region HS #4	1,215	2011-Q1	\$76,623,750	\$82,730,266	7.97%	0.38%
Valley Region HS #9	810	2011-Q2	\$48,379,800	\$50,853,421	5.11%	0.29%
Central Region MS #7	1,350	2011-Q2	\$81,149,250	\$82,822,426	2.06%	0.01%
South Region HS #2	2,025	2011-Q2	\$95,571,087	\$98,333,501	2.89%	0.00%
Central Region HS #16	2,025	2011-Q2	\$94,676,344	\$98,600,168	4.14%	0.68%
South Region ES #6	950	2011-Q2	\$28,201,885	\$30,098,053	6.72%	2.13%
Central Region ES #14	875	2011-Q3	\$29,378,042	\$35,396,599	20.49%	8.10%
South Region HS #4	1,809	2011-Q3	\$112,990,500	\$113,608,549	0.55%	0.00%
Central Region HS #13	2,295	2011-Q3	\$122,173,800	\$134,935,546	10.45%	7.35%
South LA Area New HS #3	2,025	2011-Q4	\$86,299,500	\$90,178,608	4.49%	0.37%
<b>Total</b>	<b>11 Projects</b>		<b>\$781,091,958</b>	<b>\$824,409,150</b>	<b>5.55%</b>	<b>1.81%</b>

- (i) New this month
- (ii) Included with another project

**GRAND TOTAL**

Summary Totals		Seats	Original Contract Amount	Final Contract Amount	Total Change Order %	User Change Order %
Renovation	4 Projects	1,841	\$71,185,500	\$90,037,132	26.48%	2.69%
All Other Projects	227 Projects	128,535	\$4,392,874,659	\$4,698,311,522	6.95%	0.63%
<b>Grand Total</b>	<b>231 Projects</b>	<b>130,376</b>	<b>\$4,464,060,159</b>	<b>\$4,788,348,654</b>	<b>7.26%</b>	<b>0.67%</b>



**REPAIR & MODERNIZATION CHANGE ORDER RATES**

**FORMAL CONTRACTS COMPLETED PRIOR TO 2011**

	Original Contract Amount	Final Contract Amount	Total Change Order %	User Change Order %
<b>Total</b>	\$2,181,488,548	\$2,406,740,001	10.33%	1.99%

**FORMAL CONTRACTS COMPLETED FROM 2011 FORWARD**

School Name	Project Description	Date Complete	Original Contract Amount	Final Contract Amount	Total Change Order %	User Change Order %
Banning HS	Remove / Replace Roof	Q1-2011	\$548,000	\$681,868	24.43%	24.43%
Beckford ES	Reroof Mansards	Q1-2011	\$421,900	\$436,729	3.51%	0.00%
Cabrillo ES	Fire Alarm System	Q1-2011	\$353,000	\$378,052	7.10%	0.00%
Century Park ES	Upgrade Fire Alarm & Comply with Associated State Requirements	Q1-2011	\$444,000	\$455,584	2.61%	0.00%
Chase ES	Exterior Painting for Entire Campus	Q1-2011	\$54,200	\$54,200	0.00%	0.00%
Cimarron ES / Clay MS	Fire Alarm (Bundling Effort)	Q1-2011	\$1,620,000	\$2,076,309	28.17%	0.00%
Dorsey HS	Small Learning Communities Facilities Upgrade (Phase I)	Q1-2011	\$385,441	\$441,721	14.60%	0.00%
Elizabeth Learning Center	Science Lab Renovation	Q1-2011	\$329,000	\$344,656	4.76%	0.00%
Franklin HS	Grandstand & ADA Compliance	Q1-2011	\$1,189,000	\$2,044,909	71.99%	0.00%
Grant HS	Small Learning Communities Facilities Upgrade (Phase I)	Q1-2011	\$862,000	\$974,884	13.10%	0.76%
Grape ES	Upgrade Fire Alarm & Comply with Associated State Requirements	Q1-2011	\$346,700	\$380,399	9.72%	0.00%
Independence ES	Fire Alarm System	Q1-2011	\$495,000	\$508,561	2.74%	0.00%
Latona ES	Fire Alarm; New Multi-Purpose and Classroom Buildings	Q1-2011	\$3,863,000	\$4,392,750	13.71%	0.00%
Limerick ES	New Library Building - Phase II	Q1-2011	\$1,249,000	\$1,345,436	7.72%	0.00%
Lockwood ES	Upgrade Fire Alarm & Comply with Associated State Requirements	Q1-2011	\$446,000	\$500,571	12.24%	0.00%
Los Angeles Center for Enriched Studies	Modernization - Elevator	Q1-2011	\$378,000	\$389,080	2.93%	0.00%
Madison MS	Repair & Replace Folding Bleachers	Q1-2011	\$248,600	\$293,910	18.23%	0.00%
Pomelo ES	Exterior Paint; Interior Paint	Q1-2011	\$96,000	\$96,000	0.00%	0.00%
Reseda HS / Sherman Oaks Center for Enriched Studies	Science Lab Renovation	Q1-2011	\$565,000	\$761,190	34.72%	0.00%
San Miguel ES	Exterior Paint; Interior Paint	Q1-2011	\$139,000	\$139,000	0.00%	0.00%
South Gate HS	Remove / Replace Folding Bleachers	Q1-2011	\$406,000	\$437,910	7.86%	0.00%





**FORMAL CONTRACTS COMPLETED FROM 2011 FORWARD**

School Name	Project Description	Date Complete	Original Contract Amount	Final Contract Amount	Total Change Order %	User Change Order %
Sylmar HS	Science Lab Renovation	Q1-2011	\$645,000	\$731,849	13.46%	0.30%
Van Nuys HS	Remove / Replace Roofing, Gutters, & Downspouts	Q1-2011	\$178,835	\$188,488	5.40%	0.00%
Verdugo Hills HS	Repair / Replace Grandstands	Q1-2011	\$948,000	\$1,089,167	14.89%	0.00%
66th St. ES	Fire Alarm System	Q2-2011	\$648,495	\$686,691	5.89%	0.00%
Audubon MS	Fire Alarm (Bundling Effort)	Q2-2011	\$1,772,000	\$2,609,641	47.27%	0.00%
Banning HS	Small Learning Communities Facilities Upgrade (Phase I)	Q2-2011	\$489,000	\$608,173	24.37%	4.17%
Belvedere MS	Gym Access Compliance / Bleacher Replacement / Fire Alarm	Q2-2011	\$808,000	\$1,163,580	44.01%	-1.00%
Burbank MS	Replace HVAC	Q2-2011	\$1,791,000	\$2,169,331	21.12%	2.90%
Carson HS	Science Lab Renovation	Q2-2011	\$200,000	\$246,655	23.33%	0.00%
Cleveland HS	Repair / Replace Grandstands; Softball Field	Q2-2011	\$1,397,000	\$2,612,241	86.99%	4.58%
Fishburn ES	Upgrade Fire Alarm & Comply with Associated State Requirements and Upgrade Elevator Controller to Meet DSA Requirement	Q2-2011	\$390,000	\$411,795	5.59%	0.00%
Florence ES	Exterior Painting & Refinish	Q2-2011	\$69,900	\$69,900	0.00%	0.00%
Granada Hills Charter HS	New Air-Conditioning	Q2-2011	\$747,000	\$834,353	11.69%	0.00%
Irving MS / Virgil MS	Seismic Retrofit-Shop; Seismic Retrofit-Gym	Q2-2011	\$1,810,000	\$1,810,000	0.00%	0.00%
Jefferson HS	Seismic Retrofit - Industrial Arts	Q2-2011	\$750,000	\$656,722	-12.44%	0.00%
Lankershim ES	Upgrade Fire Alarm & Comply with Associated State Requirements	Q2-2011	\$386,900	\$477,626	23.45%	3.42%
Lokrantz Special Education Center	Fire Alarm System	Q2-2011	\$535,000	\$541,978	1.30%	0.00%
Napa ES	Exterior Paint; Interior Paint	Q2-2011	\$88,950	\$88,950	0.00%	0.00%
Panorama HS	New Sanitary Building	Q2-2011	\$412,000	\$625,929	51.92%	0.00%
President ES	Fire Alarm System	Q2-2011	\$415,000	\$434,522	4.70%	0.00%
State ES	Upgrade Fire Alarm & Comply with Associated State Requirements	Q2-2011	\$595,000	\$769,433	29.32%	2.04%
Tulsa ES	Roofing / Gutters / Downspouts	Q2-2011	\$262,315	\$262,315	0.00%	0.00%
Western ES	Exterior Painting & Refinish	Q2-2011	\$78,999	\$78,999	0.00%	0.00%
Wilson HS	Slope Repair; Tennis Court Repair	Q2-2011	\$819,000	\$849,000	3.66%	0.00%
Woodland Hills ES	Office Modernization	Q2-2011	\$468,400	\$582,298	24.32%	0.00%



**FORMAL CONTRACTS COMPLETED FROM 2011 FORWARD**

School Name	Project Description	Date Complete	Original Contract Amount	Final Contract Amount	Total Change Order %	User Change Order %
Youth Services: Valley Field Office	Replace Deteriorated Roofing	Q2-2011	\$559,323	\$562,788	0.62%	0.00%
118th St. ES / 107th St. ES	Remove & Replace Heating Unit	Q3-2011	\$499,840	\$660,627	32.17%	0.00%
59th St. ES	Fire Alarm System	Q3-2011	\$425,000	\$609,045	43.30%	5.34%
68th St. ES	Replace Fire Alarm	Q3-2011	\$498,000	\$553,144	11.07%	0.00%
Alexandria ES	16 New A/C Units in Four 2-Story Buildings; 37 New Wall Mounts/20 New Roof Fixtures; Upgrade Fire Alarm & Comply with Associated State Requirements	Q3-2011	\$2,180,000	\$2,655,941	21.83%	3.73%
Angeles Mesa ES	Upgrade Fire Alarm & Comply with Associated State Requirements	Q3-2011	\$422,000	\$440,003	4.27%	0.00%
Bandini ES	Fire Alarm System	Q3-2011	\$497,600	\$574,249	15.40%	0.00%
Banning HS	Repair and Upgrade Athletic Fields	Q3-2011	\$4,345,000	\$5,282,613	21.58%	0.00%
Barrett ES	Upgrade Fire Alarm & Comply with Associated State Requirements	Q3-2011	\$458,000	\$646,571	41.17%	0.00%
Belmont HS	Renovate Existing Athletic Field	Q3-2011	\$2,345,800	\$2,583,450	10.13%	0.00%
Bethune MS	A/C: Redesign of Administration/Shop Buildings; A/C: Auditorium/Gym	Q3-2011	\$1,045,000	\$1,542,722	47.63%	4.21%
Bradley Environmental Science/Humanities Magnet	Fire Alarm System	Q3-2011	\$424,000	\$528,502	24.65%	0.00%
Calvert ES	Community School Park	Q3-2011	\$387,000	\$487,100	25.87%	0.00%
Canoga Park ES	Remove & Replace Roofing and Gutters	Q3-2011	\$420,000	\$426,693	1.59%	0.00%
Carnegie MS / Fleming MS	Fire Alarm (Bundling Effort)	Q3-2011	\$2,888,000	\$3,521,895	21.95%	0.98%
Carver MS	Access Compliance (Bundling Effort); Install Artificial Turf - Soccer Field; Install Field Lighting/Sanitary Building	Q3-2011	\$1,750,000	\$2,116,600	20.95%	0.00%
Castelar ES	Upgrade Fire Alarm & Comply with Associated State Requirements; Renovate Library	Q3-2011	\$3,650,000	\$4,942,395	35.41%	0.43%
Chatsworth HS	Exterior Painting & Refinish	Q3-2011	\$239,000	\$278,829	16.66%	0.00%
Chatsworth HS / Stoney Point Continuation HS	Fire Alarm System	Q3-2011	\$1,630,000	\$1,906,833	16.98%	0.00%
Cleveland HS	Exterior Painting & Refinish	Q3-2011	\$159,770	\$159,770	0.00%	0.00%
Del Amo ES	Lunch Shelter	Q3-2011	\$238,000	\$247,763	4.10%	-2.37%
Edison MS	Upgrade Fire Alarm & Comply with Associated State Requirements	Q3-2011	\$1,068,900	\$1,011,998	-5.32%	0.00%
El Camino Real HS / Gardena HS	Seismic Retrofit: Physical Education Building; Seismic Retrofit: Administration Building	Q3-2011	\$2,791,000	\$2,791,000	0.00%	0.00%



**FORMAL CONTRACTS COMPLETED FROM 2011 FORWARD**

School Name	Project Description	Date Complete	Original Contract Amount	Final Contract Amount	Total Change Order %	User Change Order %
El Sereno MS	Fire Alarm System; Modernization; Playground Resurfacing	Q3-2011	\$4,298,000	\$4,858,828	13.05%	0.00%
Erwin ES	Library Modernization	Q3-2011	\$563,500	\$568,234	0.84%	0.00%
Eshelman ES	Upgrade Fire Alarm & Comply with Associated State Requirements	Q3-2011	\$478,500	\$524,266	9.56%	1.33%
Farmdale ES	New Sanitary Building	Q3-2011	\$118,125	\$187,514	58.74%	0.00%
Farmdale ES	Fire Alarm (Bundling Effort)	Q3-2011	\$391,006	\$488,625	24.97%	0.00%
Figueroa ES	Upgrade Fire Alarm & Comply with Associated State Requirements	Q3-2011	\$411,000	\$415,190	1.02%	0.00%
Figueroa ES	HVAC Installation	Q3-2011	\$197,000	\$203,324	3.21%	0.00%
Fremont HS	Air-Conditioning: Auditorium & Gym	Q3-2011	\$1,125,000	\$1,198,314	6.52%	0.00%
Fremont HS	Convert Auto Shop to Classroom	Q3-2011	\$780,000	\$843,327	8.12%	0.00%
Frost MS	Air Conditioning	Q3-2011	\$359,000	\$384,438	7.09%	0.00%
Jefferson HS	New Tech High (Phase II)	Q3-2011	\$1,827,000	\$1,827,000	0.00%	0.00%
Lillian ES	Upgrade Fire Alarm & Comply with Associated State Requirements	Q3-2011	\$468,000	\$548,535	17.21%	0.00%
Manhattan ES	Office Modernization	Q3-2011	\$273,000	\$386,579	41.60%	0.00%
Markham MS	Turf, Lighting & Restrooms (Phase I and Phase II DSA)	Q3-2011	\$2,474,859	\$2,716,353	9.76%	1.75%
Menlo ES	Fire Alarm System	Q3-2011	\$499,000	\$657,854	31.83%	0.00%
Miles ES	New Literacy Garden	Q3-2011	\$137,500	\$141,242	2.72%	0.00%
Miller ES	Fire Alarm (Bundling Effort)	Q3-2011	\$463,000	\$571,021	23.33%	0.00%
Narbonne HS	Fire Alarm (Bundling Effort)	Q3-2011	\$1,757,000	\$2,491,029	41.78%	0.00%
Narbonne HS	Science Lab Renovation	Q3-2011	\$548,000	\$562,508	2.65%	0.00%
Nightingale MS	Upgrade Fire Alarm & Comply with Associated State Requirements	Q3-2011	\$855,000	\$1,184,840	38.58%	0.00%
Olive Vista MS	Fire Alarm System	Q3-2011	\$1,275,000	\$1,373,443	7.72%	0.00%
Pinewood ES	Replace Fire Alarm System	Q3-2011	\$648,000	\$888,689	37.14%	0.00%
Polytechnic HS	Replace Fire Alarm System	Q3-2011	\$2,135,000	\$2,743,247	28.49%	0.00%
Porter MS	Upgrade Fire Alarm & Comply with Associated State Requirements	Q3-2011	\$784,000	\$783,670	-0.04%	0.00%
Revere Charter MS	Exterior Painting & Refinish	Q3-2011	\$153,999	\$153,999	0.00%	0.00%
Revere Charter MS	Remove & Replace Deteriorated Roofing	Q3-2011	\$987,027	\$1,000,571	1.37%	0.00%



**FORMAL CONTRACTS COMPLETED FROM 2011 FORWARD**

School Name	Project Description	Date Complete	Original Contract Amount	Final Contract Amount	Total Change Order %	User Change Order %
San Pedro ES	Fire Alarms	Q3-2011	\$512,000	\$882,113	72.29%	0.00%
Santa Monica Community Charter ES	Fire Alarm System	Q3-2011	\$424,000	\$434,187	2.40%	0.00%
Sunland ES	Replace Fire Alarm System	Q3-2011	\$677,000	\$785,847	16.08%	0.00%
Sylmar HS	Small Learning Communities Facilities Upgrade (Phase I)	Q3-2011	\$704,000	\$969,577	37.72%	1.73%
Taper ES	Fire Alarm System	Q3-2011	\$439,000	\$576,654	31.36%	0.00%
University HS / Indian Springs HS	Fire Alarm System	Q3-2011	\$1,297,000	\$1,611,865	24.28%	0.00%
Van Nuys HS	Remove & Replace Grandstands	Q3-2011	\$1,386,000	\$2,019,166	45.68%	0.82%
Vermont ES	Fire Alarm System	Q3-2011	\$369,700	\$454,067	22.82%	0.00%
Willenberg Special Education Center	Upgrade Fire Alarm & Comply with Associated State Requirements	Q3-2011	\$913,000	\$934,393	2.34%	0.00%
Wilmington MS	Upgrade Fire Alarm & Comply with Associated State Requirements	Q3-2011	\$777,000	\$1,086,458	39.83%	0.00%
15th St. ES	Fire Alarm System	Q4-2011	\$434,000	\$545,878	25.78%	0.00%
24th St. ES	Provide Food Service Building	Q4-2011	\$2,749,000	\$3,404,086	23.83%	0.99%
61st St. ES	Upgrade Fire Alarm & Comply with Associated State Requirements	Q4-2011	\$419,000	\$600,194	43.24%	0.00%
92nd St. ES	Replace Fire Alarm System	Q4-2011	\$392,000	\$434,038	10.72%	0.00%
Ambler ES	Fire Alarm System	Q4-2011	\$423,000	\$674,774	59.52%	0.00%
Banning HS	Culinary Arts Academy	Q4-2011	\$598,700	\$711,913	18.91%	0.00%
Beethoven ES / Vine ES	Soccer Field and Landscape Improvements; Community School Park	Q4-2011	\$974,620	\$981,153	0.67%	0.23%
Bell HS	Replace HVAC; Remove & Replace Grandstands; Upgrade Fire Alarm & Comply with Associated State Requirements	Q4-2011	\$4,127,000	\$5,004,512	21.26%	2.80%
Braddock ES	Upgrade Fire Alarm & Comply with Associated State Requirements	Q4-2011	\$335,200	\$338,706	1.05%	0.00%
Bright ES	Remove and Replace Hot Water Boiler	Q4-2011	\$846,168	\$893,083	5.54%	1.28%
Carson HS	Replace Concrete Columns	Q4-2011	\$78,450	\$81,898	4.39%	0.00%
Carson HS / Eagle Tree Continuation HS	Renovate Building; Replace Fire Alarm System; Fire Alarm System	Q4-2011	\$5,488,000	\$7,786,278	41.88%	2.43%
Chime Charter MS (Collier ES)	Remove & Replace Roofing, Gutter and Downspouts	Q4-2011	\$222,100	\$223,067	0.44%	0.00%
Coldwater Canyon ES	Provide New Modular Building; Library Modernization; Office Modernization	Q4-2011	\$1,267,000	\$1,627,875	28.48%	0.00%
Darby ES	Repair Arcades & Lunch Shelters	Q4-2011	\$92,740	\$92,740	0.00%	0.00%



**FORMAL CONTRACTS COMPLETED FROM 2011 FORWARD**

School Name	Project Description	Date Complete	Original Contract Amount	Final Contract Amount	Total Change Order %	User Change Order %
Dorris ES	Replace Campus-Wide Fire Alarm System	Q4-2011	\$236,700	\$318,284	34.47%	0.00%
Franklin HS	Small Learning Communities DSA; Banner Installation	Q4-2011	\$724,300	\$786,556	8.60%	0.00%
Fremont HS	Install New Synthetic Track & Field, Scoreboard & Field Lights	Q4-2011	\$2,398,535	\$2,475,805	3.22%	0.00%
Fremont HS	SLC Facilities Upgrades - (Phase 1) Outdoor Spaces, Visual Identity	Q4-2011	\$767,000	\$812,151	5.89%	0.00%
Fullbright ES	Paving	Q4-2011	\$459,000	\$562,469	22.54%	0.00%
Gage MS	Upgrade Fire Alarm & Comply with Associated State Requirements	Q4-2011	\$1,143,000	\$1,143,000	0.00%	0.00%
Gates ES	Upgrade Fire Alarm & Comply with Associated State Requirements	Q4-2011	\$479,000	\$479,000	0.00%	0.00%
Gridley ES	Fire Alarm System	Q4-2011	\$242,000	\$242,000	0.00%	0.00%
Hancock Park ES	Upgrade Fire Alarm & Comply with Associated State Requirements	Q4-2011	\$445,000	\$451,592	1.48%	0.00%
Heliotrope ES	Upgrade Fire Alarm & Comply with Associated State Requirements	Q4-2011	\$522,000	\$529,076	1.36%	0.00%
Independence Continuation HS	Fire Alarm System	Q4-2011	\$313,125	\$321,967	2.82%	0.00%
Lanterman Special Education HS	Fire Alarm System	Q4-2011	\$424,000	\$501,456	18.27%	0.00%
Liggett ES	Two-Story Modular Building	Q4-2011	\$1,039,000	\$1,211,394	16.59%	15.20%
Manual Arts HS	Convert Classroom to Flexible Science Lab; Renovate Main Gym	Q4-2011	\$794,000	\$850,491	7.11%	0.00%
Miramonte ES	Fire Alarm (Bundling Effort)	Q4-2011	\$597,600	\$597,600	0.00%	0.00%
Multnomah ES	Provide Multi-Purpose Room, Increase Food Service	Q4-2011	\$4,686,672	\$4,686,672	0.00%	0.00%
Noble ES	Upgrade Fire Alarm & Comply With Associated State Requirements	Q4-2011	\$389,789	\$416,842	6.94%	0.00%
Pacific BI Special Education Center	Upgrade Fire Alarm System	Q4-2011	\$629,800	\$726,412	15.34%	0.00%
Reseda HS	Air Conditioning - Gym Non-Year-Round	Q4-2011	\$596,000	\$794,822	33.36%	0.00%
San Antonio ES	Exterior Painting & Refinish; Interior Painting & Refinish	Q4-2011	\$126,350	\$134,801	6.69%	2.63%
San Miguel ES	Replace Fire Alarm System	Q4-2011	\$718,000	\$713,698	-0.60%	0.00%
Saturn ES	Upgrade Fire Alarm & Comply with Associated State Requirements	Q4-2011	\$478,000	\$621,402	30.00%	0.00%
Telfair ES	Provide New Assembly/Food Service/Lunch Shelter and ADA	Q4-2011	\$5,397,000	\$6,332,549	17.33%	2.34%
Valerio ES	Upgrade Fire Alarm & Comply with Associated State Requirements	Q4-2011	\$468,000	\$551,813	17.91%	0.00%
Van Nuys HS	Exterior & Interior Painting and Refinish	Q4-2011	\$1,264,959	\$1,247,774	-1.36%	7.22%



**FORMAL CONTRACTS COMPLETED FROM 2011 FORWARD**

School Name	Project Description	Date Complete	Original Contract Amount	Final Contract Amount	Total Change Order %	User Change Order %
Westchester HS / Del Rey Continuation HS	Replace Fire Alarm	Q4-2011	\$1,538,000	\$1,542,950	0.32%	0.00%
32nd St/USC Performing Arts Magnet	Update Fire Alarm & Comply with Associated State Requirements	Q1-2012	\$296,000	\$353,369	19.38%	0.00%
93rd St. ES	Replace Fire Alarm System	Q1-2012	\$629,000	\$684,346	8.80%	0.00%
El Camino Real HS / Leonis Continuation HS	Replace Fire Alarm; Fire Alarm System	Q1-2012	\$1,529,000	\$1,808,704	18.29%	0.00%
Hobart ES	Upgrade Fire Alarm & Comply with Associated State Requirements	Q1-2012	\$437,800	\$619,677	41.54%	0.00%
Hubbard ES	Upgrade Fire Alarm & Comply with Associated State Requirements	Q1-2012	\$405,500	\$419,917	3.56%	0.00%
Lemay ES	Roof Coverings	Q1-2012	\$250,850	\$250,850	0.00%	0.00%
Lincoln HS	Provide Security Lighting	Q1-2012	\$156,000	\$156,000	0.00%	0.00%
Loreto ES	Upgrade Fire Alarm & Comply With Associated State Requirements	Q1-2012	\$367,000	\$372,184	1.41%	0.00%
Los Angeles HS	Fire Alarm System	Q1-2012	\$1,697,000	\$2,009,717	18.43%	0.00%
Madison MS	Replace Fire Alarm System	Q1-2012	\$1,163,750	\$1,662,803	42.88%	0.00%
North Hollywood HS	Fire Alarm	Q1-2012	\$1,352,000	\$1,764,821	30.53%	0.35%
Parthenia ES	Repair Arcades & Lunch Shelters	Q1-2012	\$371,173	\$371,173	0.00%	0.00%
Reed MS	Upgrade Fire Alarm & Comply with Associated State Requirements	Q1-2012	\$1,072,000	\$1,192,232	11.22%	0.00%
Roosevelt HS	Fire Alarm System	Q1-2012	\$1,797,000	\$2,751,234	53.10%	0.00%
San Fernando MS	Update Fire Alarm & Comply with Associated State Requirements	Q1-2012	\$952,000	\$1,408,724	47.98%	20.21%
Sunrise ES	Paint Interior of School Classrooms	Q1-2012	\$75,000	\$75,000	0.00%	0.00%
Vine ES	Update Fire Alarm & Comply with Associated State Requirements	Q1-2012	\$404,000	\$404,000	0.00%	0.00%
<b>Total</b>			<b>\$149,849,965</b>	<b>\$178,478,375</b>	<b>19.10%</b>	<b>0.95%</b>

**GRAND TOTAL**

Summary Totals	Original Contract Amount	Final Contract Amount	Total Change Order %	User Change Order %
Formal Contracts Completed Prior to 2011	\$2,181,488,548	\$2,406,740,001	10.33%	1.99%
Formal Contracts Completed from 2011 Forward	\$149,849,965	\$178,478,375	19.10%	0.95%
<b>Grand Total</b>	<b>\$2,331,338,513</b>	<b>\$2,585,218,375</b>	<b>10.89%</b>	<b>1.92%</b>



**REPAIR & MODERNIZATION CHANGE ORDER RATES**

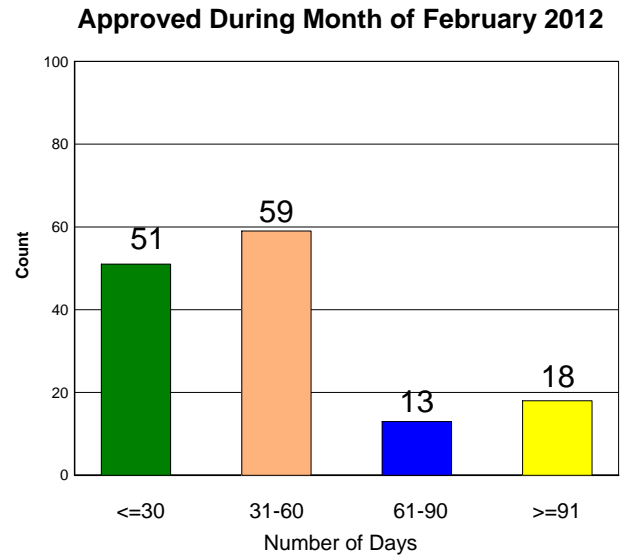
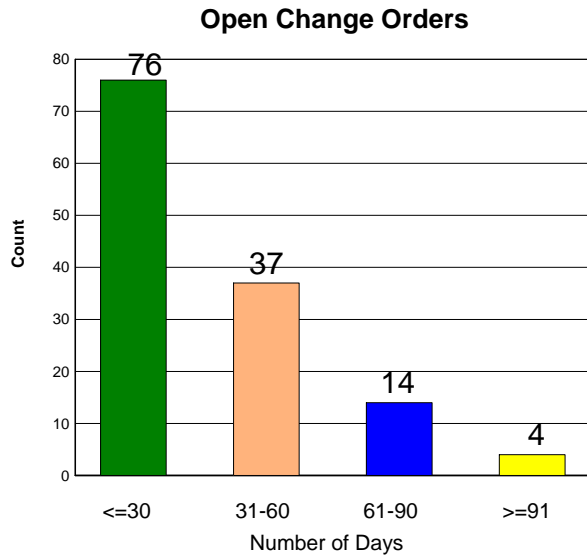
**GRAND TOTAL BY PROJECT TYPE**

<b>Project Type</b>	<b>Original Contract Amount</b>	<b>Final Contract Amount</b>	<b>Total Change Order %</b>	<b>User Change Order %</b>
Adult & Career Education	\$30,445,000	\$34,100,403	12.01%	0.95%
Air Conditioning	\$267,886,979	\$311,000,669	16.09%	6.51%
Asbestos Abatement	\$23,785,783	\$23,783,102	-0.01%	1.81%
Athletic Facilities	\$44,846,312	\$54,139,600	20.72%	2.68%
Auditorium Renovations	\$4,387,039	\$5,394,835	22.97%	3.49%
Classroom Lighting	\$11,481,038	\$11,393,019	-0.77%	0.00%
Concrete Paving	\$6,220,172	\$6,014,472	-3.31%	0.07%
DSA Access Compliance	\$20,828,137	\$23,468,448	12.68%	0.63%
DSA Fire Alarm	\$280,303,876	\$326,038,556	16.32%	0.49%
Electrical / M&O Fire Alarm	\$11,994,143	\$13,217,892	10.20%	0.78%
Elevator Systems	\$7,114,523	\$6,798,994	-4.44%	0.96%
Exterior Painting	\$43,640,862	\$46,570,969	6.71%	4.73%
Floor Coverings	\$48,872,505	\$50,388,953	3.10%	0.40%
Food Services Modernization	\$30,639,501	\$35,892,181	17.14%	1.01%
Hazard Mitigation	\$57,759,709	\$59,111,318	2.34%	1.19%
HVAC	\$66,290,641	\$72,958,674	10.06%	0.50%
Interior Painting	\$35,194,370	\$35,905,081	2.02%	0.38%
Joint-Use Athletic Field/Outdoor Facility	\$14,122,284	\$16,548,586	17.18%	0.76%
Library Renovation	\$7,550,263	\$9,041,839	19.76%	0.21%
Lockers	\$2,307,893	\$2,437,711	5.62%	3.27%
Lunch Shelters	\$18,100,426	\$19,878,644	9.82%	0.97%
Modernizations	\$163,523,010	\$195,022,577	19.26%	1.86%
New / Upgrade Library (Core)	\$3,698,500	\$4,032,643	9.03%	0.00%
New Building "Existing Facilities"	\$20,940,340	\$24,941,495	19.11%	0.29%
Paving / Greening / Equipment	\$168,824,323	\$184,257,325	9.14%	1.90%
Plumbing / Irrigation	\$62,778,588	\$65,340,613	4.08%	1.09%
Portables	\$27,610,142	\$30,307,337	9.77%	0.54%
Qualified Zone Academy Bonds (QZAB)	\$18,419,510	\$21,635,203	17.46%	2.23%
Roofing	\$61,799,484	\$63,355,769	2.52%	0.32%
Safety & Technology	\$592,067,781	\$635,516,776	7.34%	1.37%
Security System / CCTV	\$2,446,900	\$2,800,565	14.45%	0.00%
Seismic Retrofit	\$67,060,889	\$73,818,679	10.08%	3.85%
Sheet Metal / Fencing	\$25,246,916	\$26,006,997	3.01%	0.55%
Small Learning Communities	\$18,753,055	\$22,659,822	20.83%	0.93%
Wall Systems	\$19,799,413	\$20,890,431	5.51%	1.88%
Year-Round Air Conditioning Auditorium	\$15,352,827	\$16,818,840	9.55%	0.51%
Year-Round Air Conditioning Gym	\$29,245,379	\$33,729,359	15.33%	0.91%
<b>Total</b>	<b>\$2,331,338,513</b>	<b>\$2,585,218,375</b>	<b>10.89%</b>	<b>1.92%</b>



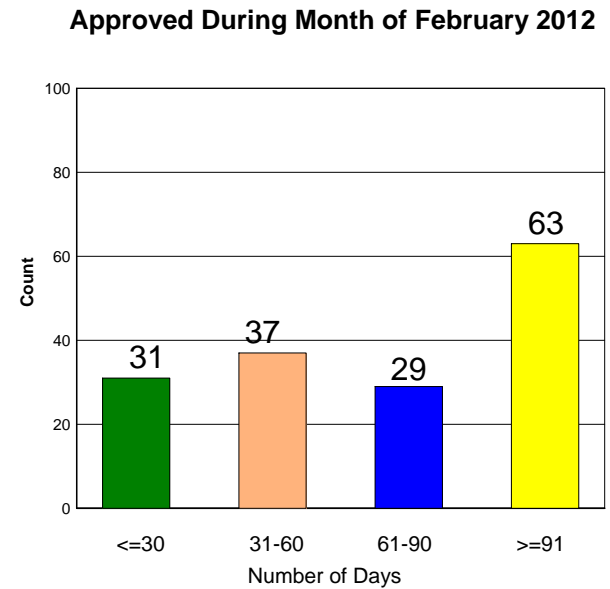
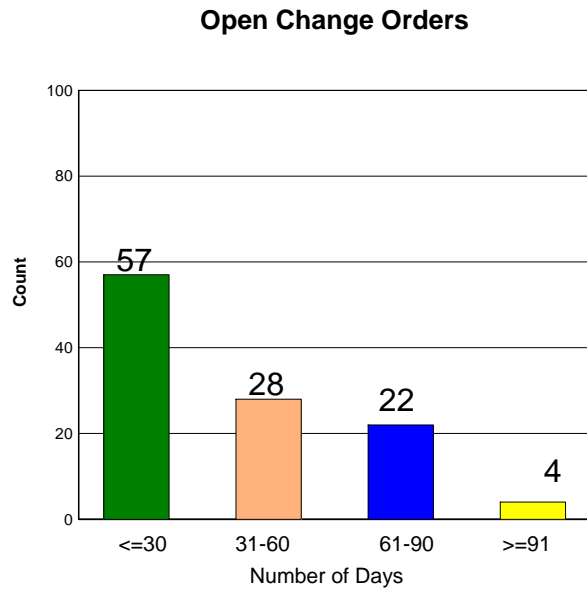
### CHANGE ORDER PROCESSING TIME

#### New Construction



NC Total Approved in February 2012: **141**  
 Average Number of Days: **49**

#### Repair & Modernization



EF Total Approved in February 2012: **160**  
 Average Number of Days: **90**

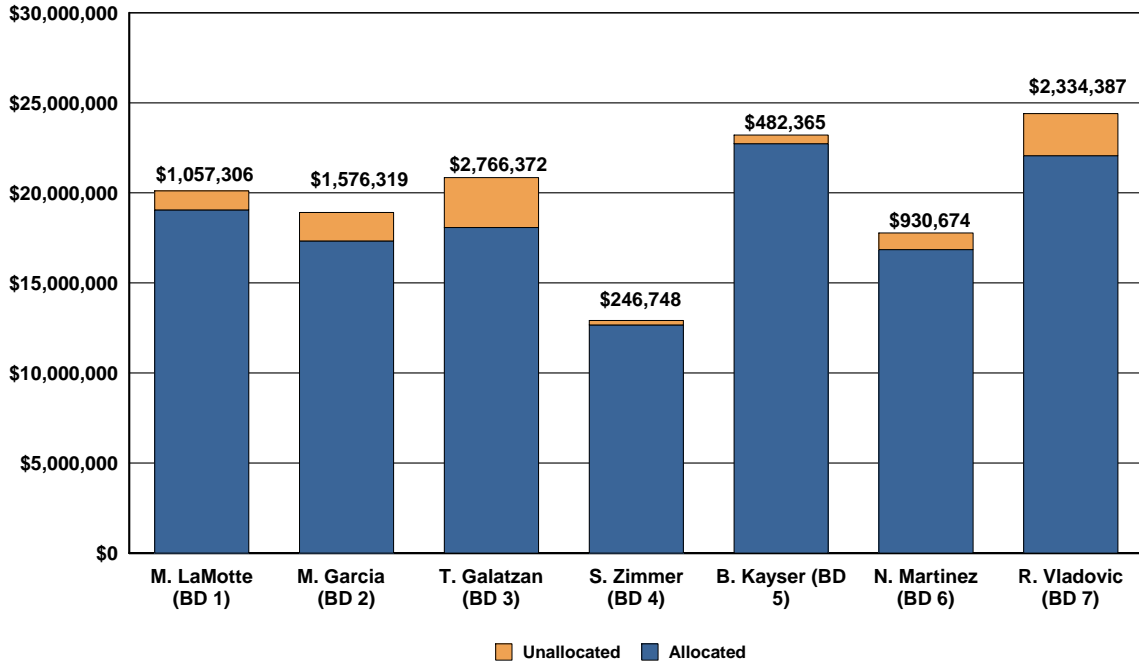
Data for Open Change Orders as of April 5, 2012



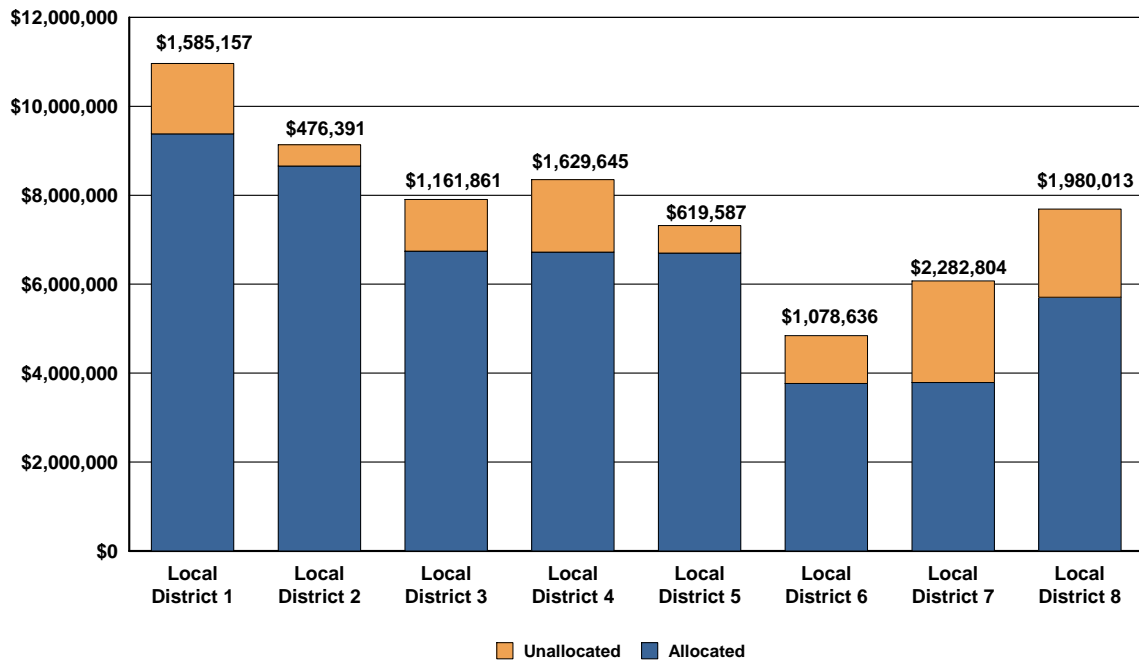


### UNALLOCATED BOND FUNDS

#### BOARD MEMBER DISCRETIONARY BOND FUNDS



#### LOCAL DISTRICT ALTERATIONS & IMPROVEMENTS BOND FUNDS



Unallocated Bond Funds as of March 13, 2012



**FEDERAL STIMULUS BOND STATUS (BAB AND QSCB)**

<b>Local Bond Measure</b>	<b>Bond Type</b>	<b>Amount Issued*</b>	<b>Expenditures as of 3/15/12</b>	<b>% Expended</b>	<b>Remaining to Spend</b>
Measure K	Build America Bonds	\$199,898,054	\$156,673,505	78.38%	\$43,224,549
Measure R	Build America Bonds	\$840,218,663	\$746,183,053	88.81%	\$94,035,610
Measure Y	Build America Bonds	\$1,579,005,124	\$919,924,878	58.26%	\$659,080,246
Measure Y	Qualified School Construction Bond	\$608,594,112	\$551,908,532	90.69%	\$56,685,580
		<b>\$3,227,715,953</b>	<b>\$2,374,689,967</b>	<b>73.57%</b>	<b>\$853,025,986</b>

\*net cost of issuance

Between October 2009 and May 2010, LAUSD sold more than \$4 billion of Measure K, Measure R and Measure Y General Obligation Bonds (GO Bonds) in an effort to ensure the District could complete the current bond program as planned.

The GO Bonds included traditional tax exempt bonds as well as Build America Bonds (BABs) and Qualified School Construction Bonds (QSCBs). BABs are taxable municipal bonds that require the Federal government to pay State or local government issuers a payment equal to 35% of the interest payments on those bonds, which lowers the issuer's cost of borrowing. QSCBs provide Federal tax credits for bondholders in lieu of interest in order to reduce an issuer's cost of borrowing and must be spent within three years of issuance.

The table above shows the amount of BABs and QSCBs issued by LAUSD, how much has been spent and how much is remaining to spend.



## BOARD OF EDUCATION ACTIONS

### RECENT BOARD ACTIONS THROUGH MARCH 15, 2012

Report #	Action Item	BOC Date
N/A		

### UPCOMING BOARD ACTIONS IN APRIL 2012

Report #	Action Item	BOC Date
201-11/12	Amendment to the Facilities Services Division Strategic Execution Plan to Cancel 633 and Unfund 288 Projects	21-Mar-12
202-11/12	Amendment to the Facilities Services Division Strategic Execution Plan to Define and Approve Nine Alteration and Improvement and Board Member Priority Projects at Various Schools	21-Mar-12
203-11/12	Amendment to the Facilities Services Division Strategic Execution Plan to Define and Approve a Parent and Family Center Upgrade and Improvement Project at Miramonte Elementary School	21-Mar-12
205-11/12	Amendment to the Facilities Services Division Strategic Execution Plan to Define and Approve 100 Elementary School Facelift Projects	21-Mar-12
206-11/12	Amendment to the Facilities Services Division Strategic Execution Plan to Define and Approve a Project to Abate Asbestos in the Crawl Spaces and Tunnels of the Administration Building at Marshall High School	21-Mar-12
207-11/12	Amendment to the Facilities Services Division Strategic Execution Plan to Update the Photovoltaic Program	21-Mar-12